



messag

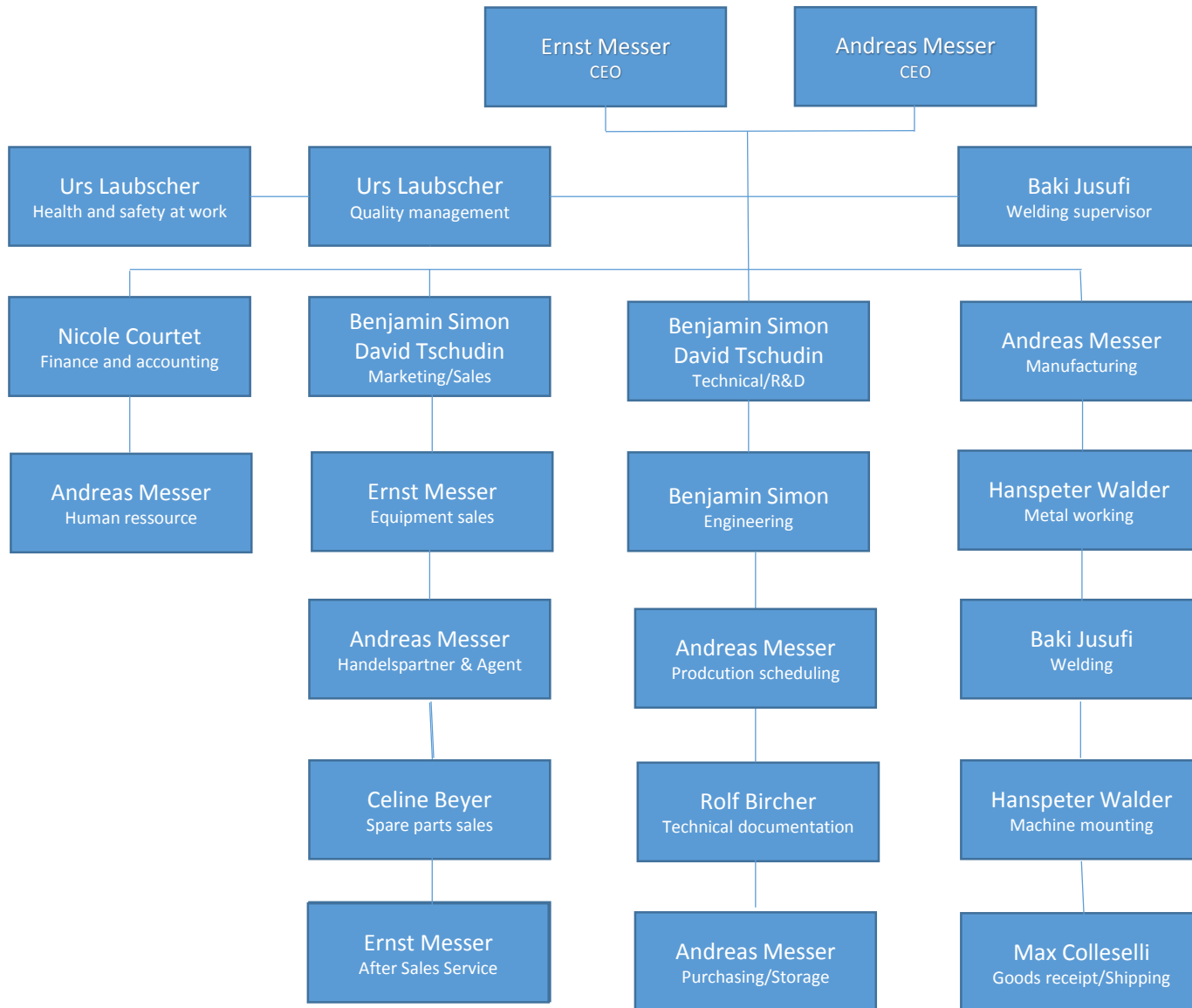
engineering | manufacturing

- **MESSAG is a swiss company located near Basel**
- **MESSAG studies, develops and manufactures complete machines and systems in the field of material handling**



- **1977 : Foundation of the MESSAG company (4 pers.)**
- **1980 : Engineering and manufacturing of equipments for sewage sludge**
- **1980's : Growing up and reaching new markets with Swiss clients : Pharma, Chemical and Food industries**
- **1993 : Building-up new facilities (2000m²)**
- **1994 : First European exhibition**
- **Since 2000 : Partnership with ETIA (French company)**
 - **Sterilization of food products**
- **2004 : Business developing, reaching 15 workers**
- **2010 : Developing new products in the field of environment and renewable energy**
- **2015 : Set-up of the ISO 9001:2014 quality management**

Organisation chart

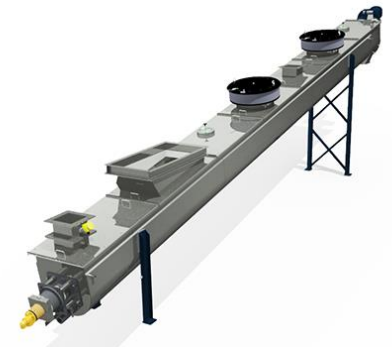
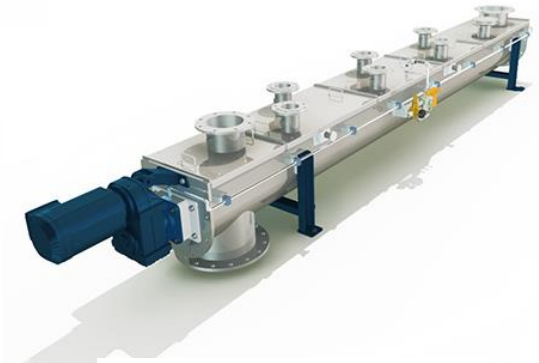
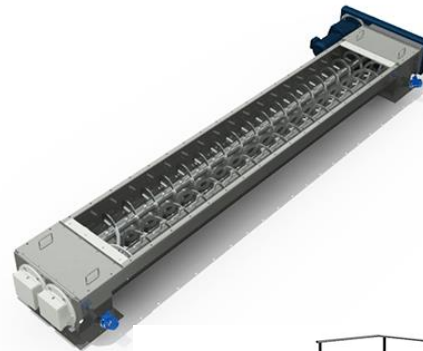
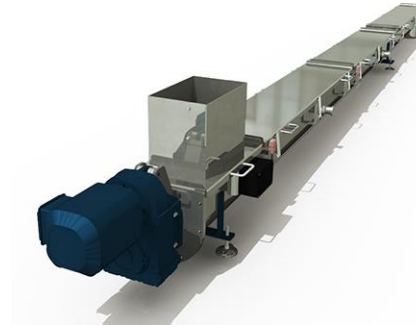


- **MESSAG employs 25 persons**
 - **10 office workers (designers, engineers, project managers)**
 - **15 welders and machine-tool operators**
 - **Our welders are certified according to EN ISO 3834-2**

- **MESSAG is specialized on customized machines in fields :**
 - **Pharma**
 - **Chemical**
 - **Food**
 - **Renewable energy**
- **Supplying customers worldwide**
- **Designing and manufacturing of a wide range of screw conveyors**
- **R&D in thermal treatment process (drying, pyrolysis...)**



- Tube and trough conveyors
- Dosing screw
- Blender
- Screw heat exchanger
- Extraction screw
- Screw press



- **All products are designed and manufactured according to EU harmonized standards and are marked with the CE label**
- **Non-exhaustive list of machine compliance standards :**
 - **EU-directive 2006/42/EG for Machinery**
 - **Safety of machinery Part1&2 EN ISO 12100**
 - **Electrical equipments of machines EN ISO 60204-1**
 - **Rules of the Association of Pressure Vessels AD2000**

Manufacturing equipments

- **CNC lathe**
- **Milling machine**
- **Press brake**
- **Welding machines**
- **Rolling machine**
- ...

